

## 5406 Series

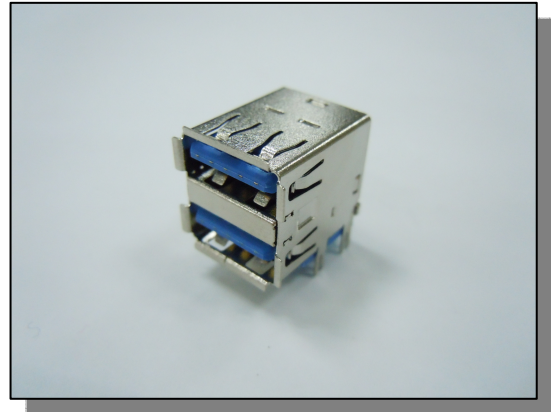
USB 3.0 Dual Port A Type Short Body R/A  
Dip Type Shell Hook Type

### Ordering Information

5406 - X11 - 1X1 - XX

Contact Area Plating:  
0: Gold Flash/Tin  
3: 30u" Gold /Tin  
5: 15u" Gold /Tin

Packing Type: Tray



### Specification

#### Material:

- ◆ **Insulator:**  
Thermoplastic UL 94V-0  
Color: Blue
- ◆ **Contact:** Copper Alloy
- ◆ **Shell:** Stainless Steel

#### Electrical:

- ◆ **Dielectric Withstanding Voltage:**  
100VAC Min.
- ◆ **Contact Resistance:**  
VBUS and GND contacts: 30 mΩ max.  
Other Contacts: 50 mΩ max.
- ◆ **Insulation Resistance:**  
100 MΩ Min.

#### Mechanical:

- ◆ **Insertion Force:** 35N Max.
- ◆ **Withdrawal Force:** 10N Min.

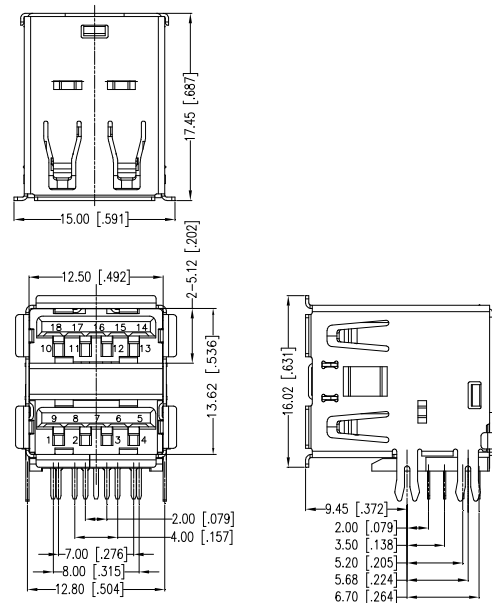
#### Environmental:

- ◆ **Temperature range:** -20°C to +85°C

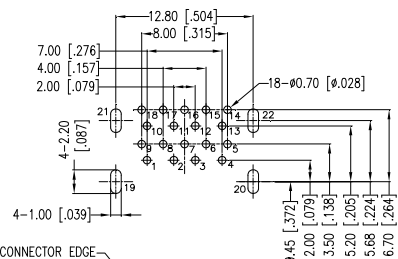
❖ The above ordering data is for our standard products. For Non-Standard products, please contact us.

### Drawing

#### 5406-X11-1X1-XX Series



#### RECOMMENDED P.C.B. LAYOUT



Pin No.	10	11	12	13	14	15	16	17	18
	1	2	3	4	5	6	7	8	9
Signal Name	VBUS	D-	D+	GND	StdA_SSRX-	StdA_SSRX+	GND_DRAIN	StdA_SSTX-	StdA_SSTX+
Remark	USB2 CONTACT PIN				USB3 CONTACT PIN				

\* ALL DIMENSIONS ARE SHOWN IN mm/in