

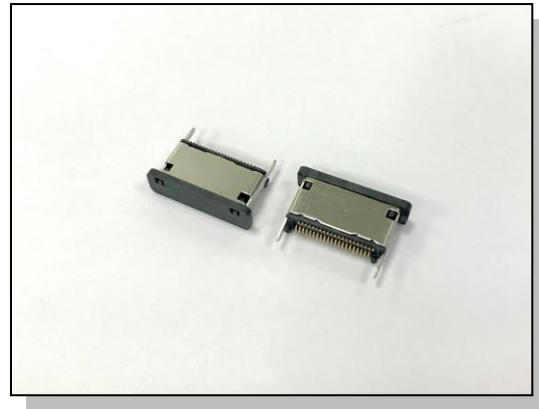
LDN Series

OCuLink PCIe x4 Fixed Internal Connector

Ordering Information

LDN2423 - 54CT0-9H

Contact Area Plating:
3: 30u" Gold



Specification

Material:

◆ Insulator:

Thermoplastic UL 94V-0
Color: Black

◆ Contact: Copper Alloy

◆ Metal Shell: Stainless Steel

Electrical:

◆ **Dielectric Withstanding Voltage:**
250 VDC Min. for 100 MS

◆ **Contact Resistance:**
50 mΩ max. after environment test

◆ **Insulation Resistance:**
100 MΩ Min.

Mechanical:

◆ **Insertion Force: 8~40N**

◆ **Withdrawal Force: 8~25N**

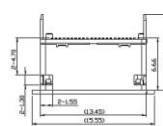
Environmental:

◆ **Temperature range: -25°C to +60°C**

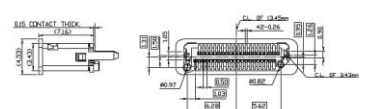
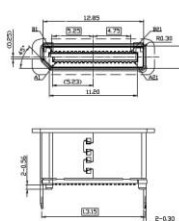
❖ The above ordering data is for our standard products. For Non-Standard products, please contact us.

Drawing

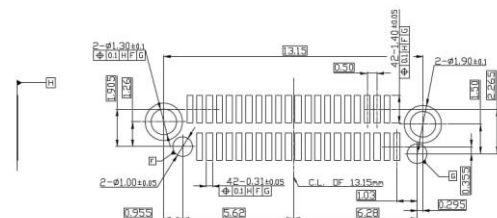
LDN2423-54CT0-9H Series



Pin	Symbol	Pin	Symbol	Pin	Symbol	Pin	Symbol	Pin	Symbol
A1	Power	Dm	DM	B2	DM	B3	DM	B4	DM
A2	DM	Dm	DM	B5	DM	B6	DM	B7	DM
A3	DM	Dm	DM	B8	DM	B9	DM	B10	DM
A4	DM	Dm	DM	B11	DM	B12	DM	B13	DM
A5	DM	Dm	DM	B14	DM	B15	DM	B16	DM
A6	DM	Dm	DM	B17	DM	B18	DM	B19	DM
A7	DM	Dm	DM	B20	DM	B21	DM	B22	DM
A8	DM	Dm	DM	B23	DM	B24	DM	B25	DM
A9	DM	Dm	DM	B26	DM	B27	DM	B28	DM
A10	DM	Dm	DM	B29	DM	B30	DM	B31	DM
A11	DM	Dm	DM	B32	DM	B33	DM	B34	DM
A12	DM	Dm	DM	B35	DM	B36	DM	B37	DM
A13	DM	Dm	DM	B38	DM	B39	DM	B40	DM
A14	DM	Dm	DM	B41	DM	B42	DM	B43	DM
A15	DM	Dm	DM	B44	DM	B45	DM	B46	DM
A16	DM	Dm	DM	B47	DM	B48	DM	B49	DM
A17	DM	Dm	DM	B50	DM	B51	DM	B52	DM
A18	DM	Dm	DM	B53	DM	B54	DM	B55	DM
A19	DM	Dm	DM	B56	DM	B57	DM	B58	DM
A20	DM	Dm	DM	B59	DM	B60	DM	B61	DM
A21	DM	Dm	DM	B62	DM	B63	DM	B64	DM
A22	DM	Dm	DM	B65	DM	B66	DM	B67	DM
A23	DM	Dm	DM	B68	DM	B69	DM	B70	DM
A24	DM	Dm	DM	B71	DM	B72	DM	B73	DM
A25	DM	Dm	DM	B74	DM	B75	DM	B76	DM
A26	DM	Dm	DM	B77	DM	B78	DM	B79	DM
A27	DM	Dm	DM	B80	DM	B81	DM	B82	DM
A28	DM	Dm	DM	B83	DM	B84	DM	B85	DM
A29	DM	Dm	DM	B86	DM	B87	DM	B88	DM
A30	DM	Dm	DM	B89	DM	B90	DM	B91	DM
A31	DM	Dm	DM	B92	DM	B93	DM	B94	DM
A32	DM	Dm	DM	B95	DM	B96	DM	B97	DM
A33	DM	Dm	DM	B98	DM	B99	DM	B100	DM



RECOMMENDED P.C.B. LAYOUT



* ALL DIMENSIONS ARE SHOWN IN mm/in